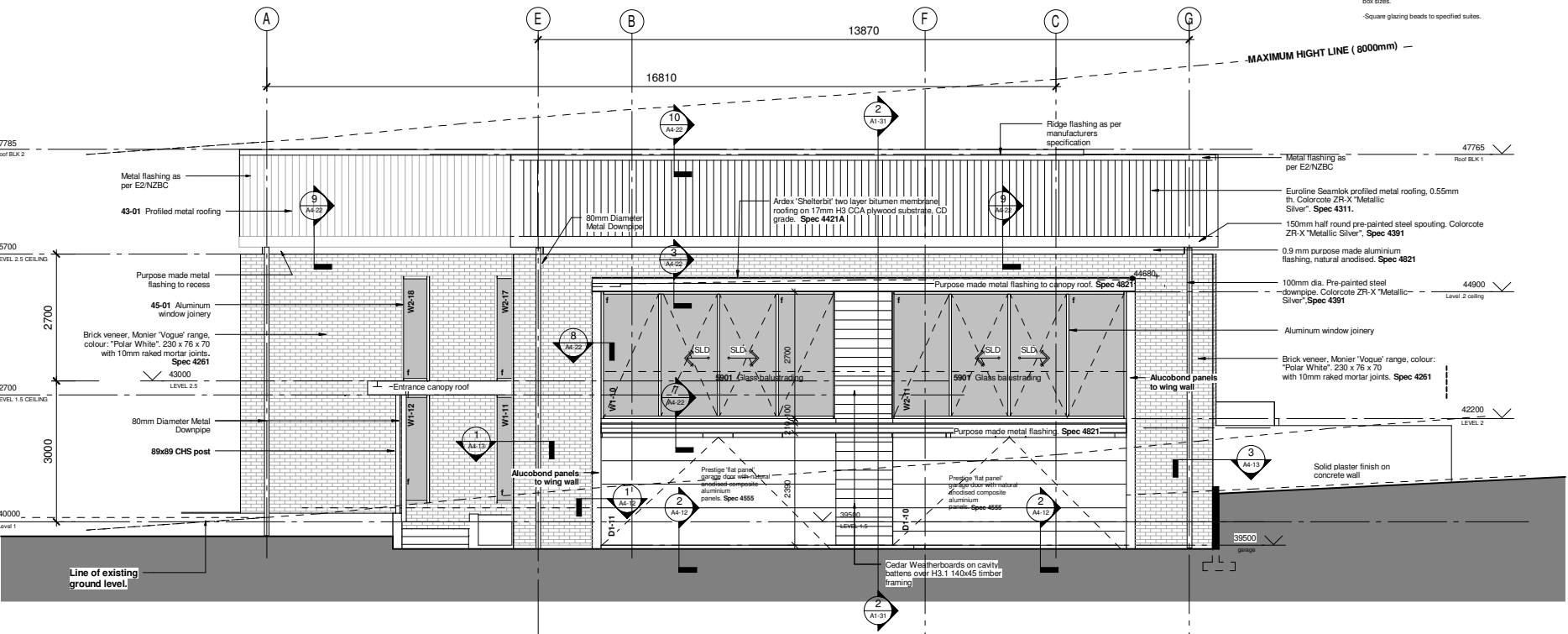


1 1:50 Elevation NORTH



2 1:50 Elevation EAST

- GENERAL NOTES FOR MATERIALS SELECTION**
- FLASHINGS:**  
Flashing materials must be selected based on environmental exposure, refer to NZS 3604 & Table 20 of NZBC E2/AS1.  
Building wrap must comply with acceptable solution E2/AS1 & NZS 3604.  
Flashing tape must have proven compatibility with the selected building wrap & other materials with which it comes into contact as per Table 21 of E2/AS1.
- BRICK VENEER:**  
**Brick work and ties**  
Use fixings and methods capable of sustaining the loads appropriate to the area as set out in NZS 3604 and NZS 4210 and as required by NZS 1170.5.  
Brickwork to comply with NZBC B1/AS1 Structure - General, 2.0 Masonry.  
**Important:**  
a. All lintel bars must be propped until mortar is set (7 days).  
b. It is important to allow the first 3 courses of the brickwork over an opening to set before  
bearing any more bricks above.  
c. Provide brick ties within the bottom two courses.  
d. All steel angle fixings to be hot dip galvanized
- STONE WORK**  
AS/NZS 2699.1 Built-in components for masonry construction - Wall ties  
NZS 3103 Sands for mortars and plasters  
NZS 4210 Masonry construction: materials and workmanship  
**Bracing design as per Engineers calculations**
- TIMBER FRAMING:**  
All timber framing to be H1.2 treated and MSG 6 unless otherwise stated.  
External decks and canopy roofs are to H3.1 unless otherwise stated.
- FLOOR DIAPHRAGMS:**  
These shall be fixed in accordance with Section 7.7.3 & fig 7.9 of NZS3604
- WINDOWS**  
Powder coated aluminium joinery to nzs 4223 and specifications (see nzs 4223 part 3 for glazing)  
Window catches to be interlock sub-fix deluxe wedge less lockable fasteners.  
Linters fixed to exterior windows to be h3.1 treated finger jointed pine wood (to suit framing).  
Linters to be related to suit wall linings.
- BUILDING WRAPS & UNDERLAYS**  
Breather type, waterproof, to NZBC E2/AS1, table 23:  
Exterior cavity wall battens  
Radiata pine battens, minimum 20mm thickness, width and height to match timber framing studs as per To NZS 3602, table 1
- DIMENSIONS**  
Check all dimensions on site prior to manufacture of timber and metal joinery.  
Internal doors: generally dimensions given are leaf size, allow for required frame and tolerance to determine the rough opening size.  
Windows: dimensions given are the rough opening size, refer to the manufacturer for platform dimension and tolerances to determine box sizes.  
Square glazing beads to specified suites.